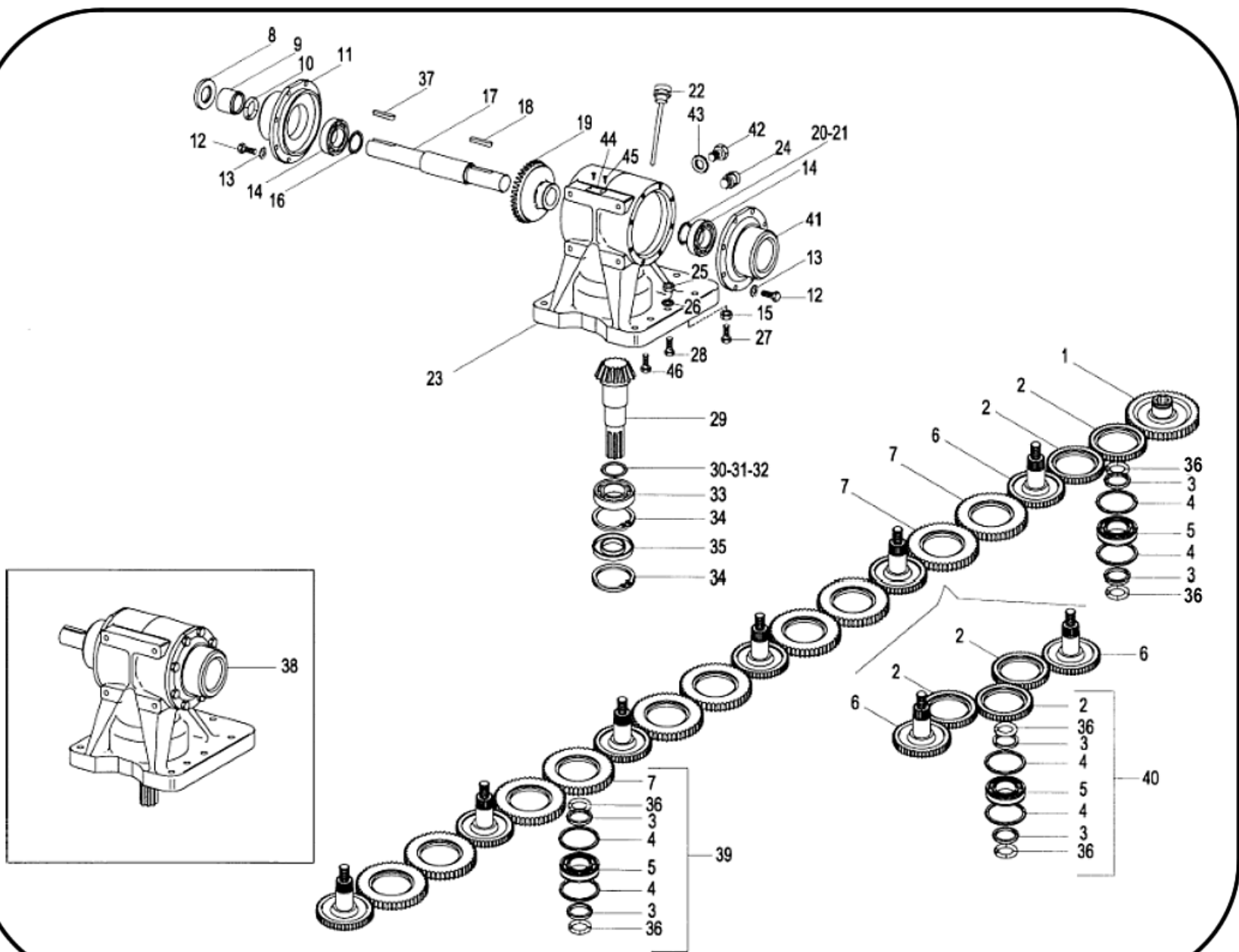




FORT DMD Transmission Parts List

(with Parts List/Numbers Below)

carverequipment.com





UNIT TRANSMISSION PARTS LIST with NUMBERS

No.	Codice	2040	2050	2060	2070	Part Description	No.	Codice	2040	2050	2060	2070	Part Description
01	014769	1	1	1	1	INPUT PINION	26	850914	10	10	10	10	FLAT WASHER Ø 12 UNI 6592
02	014770	2	5	2	5	CROWN Z-35	27	850040	2	2	2	2	SCREW TE M12x60 UNI 5739
03	010245	16	22	24	30	SPACER 40-51-4.5	28	850062	6	6	6	6	SCREW TE M12x70 UNI 5739
04	852089	16	22	24	30	ELASTIC RING	29	009435	1	1	1	1	BEVEL PINION Z-16
05	009457	8	11	12	15	BALL BEARING 6208 C3	30	852700	1	1	1	1	SPACER 50-40-0.35
06	014771	4	5	6	7	PINION Z-34	31	852701	1	1	1	1	SPACER 50-40-0.50
07	014772	6	6	10	10	CROWN Z-45	32	852739	1	1	1	1	SPACER 50-40-0.10
08	851757	1	1	1	1	RING 45-62-10	33	855218	1	1	1	1	BALL BEARING 6208 C3
09	014780	1	1	1	1	SPACER 35-45-32	34	852001	2	2	2	2	HOLE SEEGER Ø 80
10	851613	1	1	1	1	OR RING	35	851732	1	1	1	1	GAS RING 40-80-10
11	014777	1	1	1	1	OVERGEAR COVER	36	851662	16	22	24	30	OR RING 2150
12	850027	16	16	16	16	SCREW TE M10x25 UNI 5739	37	852311	1	1	1	1	FEATHER 10-8-55
13	851204	16	16	16	16	GROWER WASHER Ø 10	38	014673	1	1	1	1	COMPLETE OVERGEAR
14	855303	2	2	2	2	BALL BEARING 30207	39	014674	6	6	10	10	WHEELASSY Z-45
15	851036	4	4	4	4	NUT M12 LOWER	40	014675	2	5	2	5	WHEELASSY Z-35
16	852728	1	1	1	1	SPACER 45-35-0.10	41	014778	1	1	1	1	OVERGEAR COVER
17	014779	1	1	1	1	OVERGEAR SHAFT	42	010216	1	1	1	1	MAGNETIC CAP 3/8"
18	852304	1	1	1	1	FEATHER 10-8-45	43	851289	1	1	1	1	COPPER WASHER 3/8" GAS
19	009436	1	1	1	1	RING BEVEL GEAR Z-33	44	010085	1	1	1	1	SERIAL NR. PLATE
20	852732	1	1	1	1	SPACER 45-35-0.30	45	850779	2	2	2	2	SELF –FLANGED SCREW 3.5x6
21	852733	2	2	2	2	SPACER 45-35-0.50	46	850952	2	2	2	2	SCREW TE M12x75 UNI 5737 ZN
22	009396	1	1	1	1	BLEED WITH EIVEL ROD							
23	014775	1	1	1	1	OVERGEAR BOX		853620	0.7	0.7	0.7	0.7	BLASIA OIL 150 (Kg)
24	853109	1	1	1	1	BLEED CAP3/8" GAS CON.		853620	1.6	2.1	2.5	2.9	BLASIA OIL 150 (Kg)
25	851119	10	10	10	10	SELF LOCKING NUT M12 LOW							

Find the part(s) you need. Write down the Model Number, Part Number and how many you want.

Go back to our website and find the "contact" order form [<https://www.carverequipment.com/mobi/contact.html>]

OR call Steve: **919-902-0522** to place your parts order.